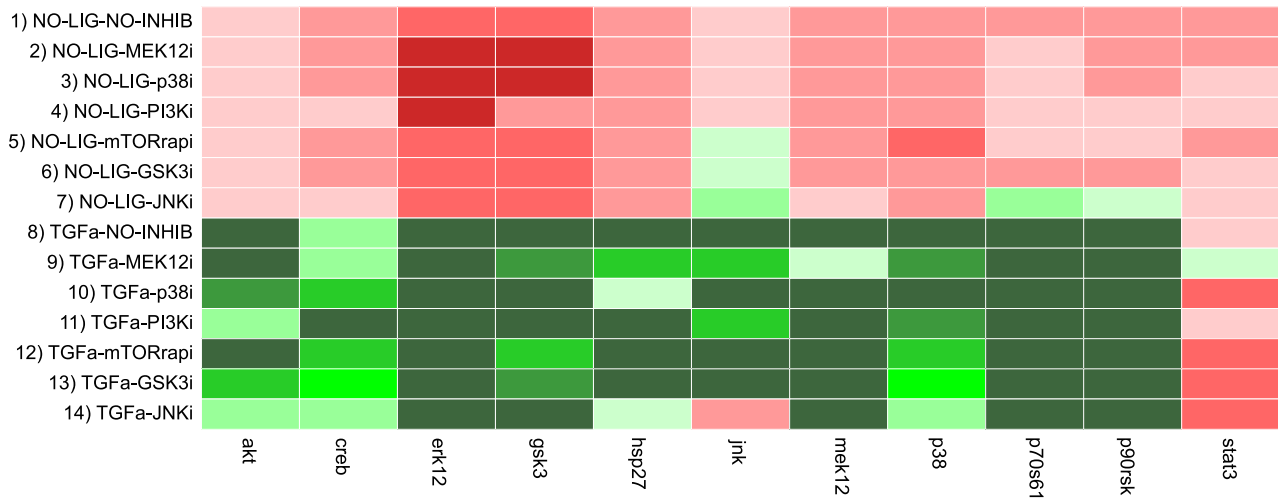


Figure S2. Sensitivities of the binarization to the chosen parameters.

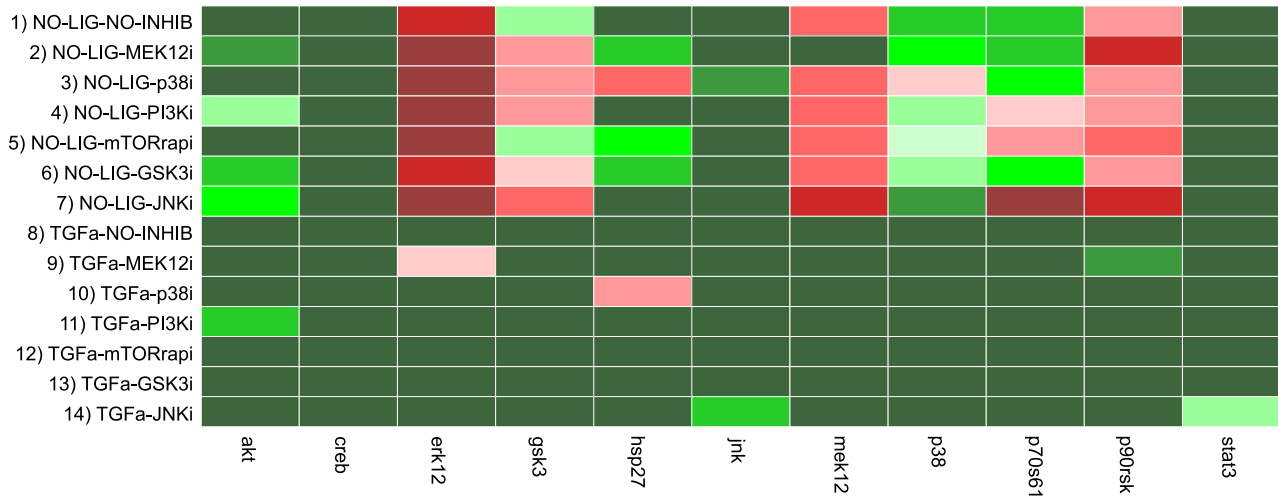
2.1 Primary human hepatocytes (data obtained from Alexopoulos et al (in preparation));
2.2 HepG2 cells (the horizontal line indicates the first (top) and the second (bottom) measurement set for HepG2 cells);

Parameter 1 (2.1a, 2.2a): the ratio between the value at time 1 and the value at time 0 lies beneath (red) or above (green) the fixed threshold $p1=1.5$;
Parameter 2 (2.1b, 2.2b): the ratio between the signal and the maximum value for this signal from all measurements lies beneath (red) or above (green) the fixed threshold $p2=0.15$;
Parameter 3 (2.1c, 2.2c): the signal lies beneath (red) or above (green) the fixed threshold for experimental noise ($p3=100$).
For all parameters: The darker a field is colored, the larger is the distance to the chosen threshold, i.e. the binarization is less sensitive on the parameter.

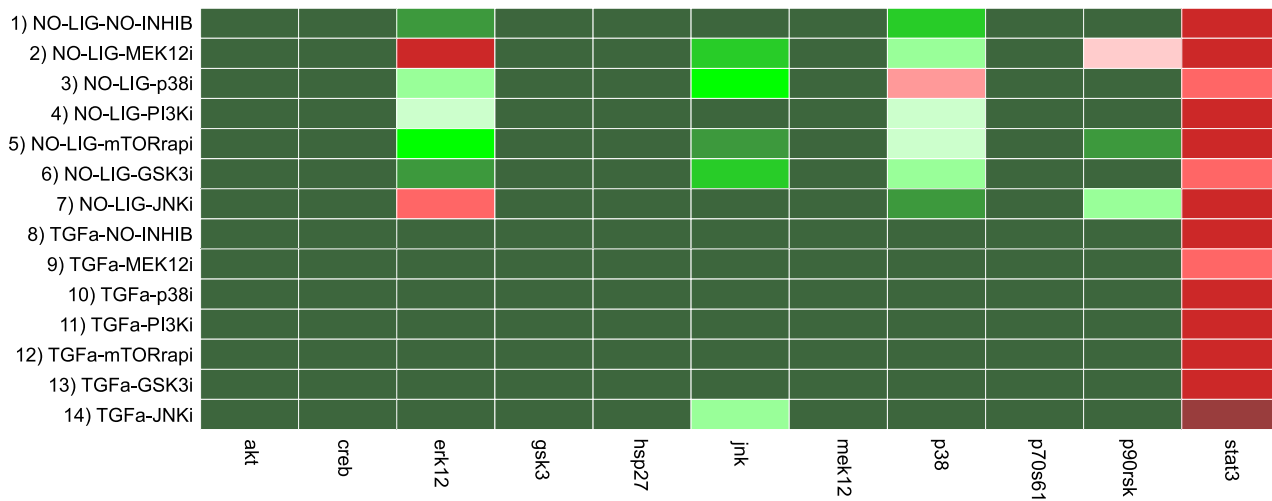
2.1a)



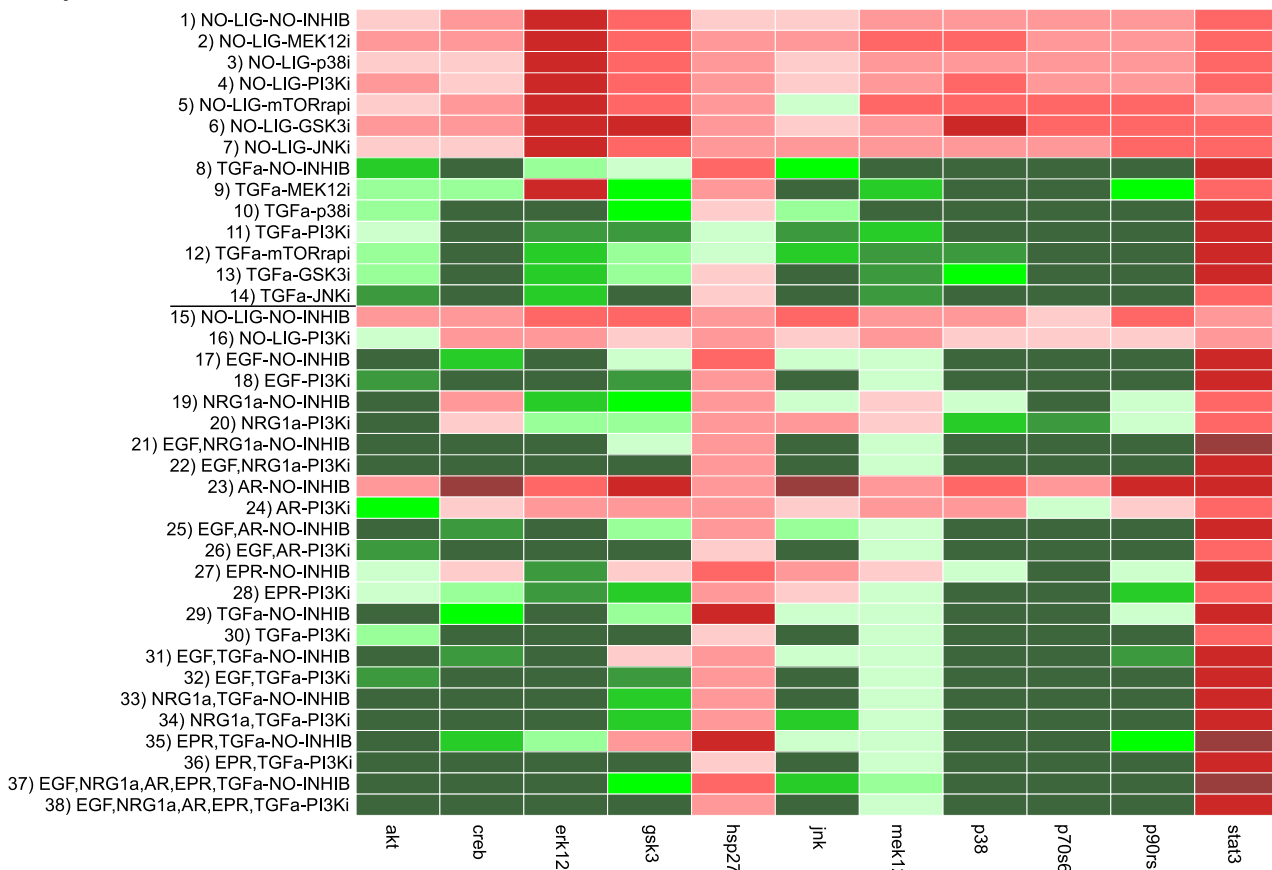
2.1b)



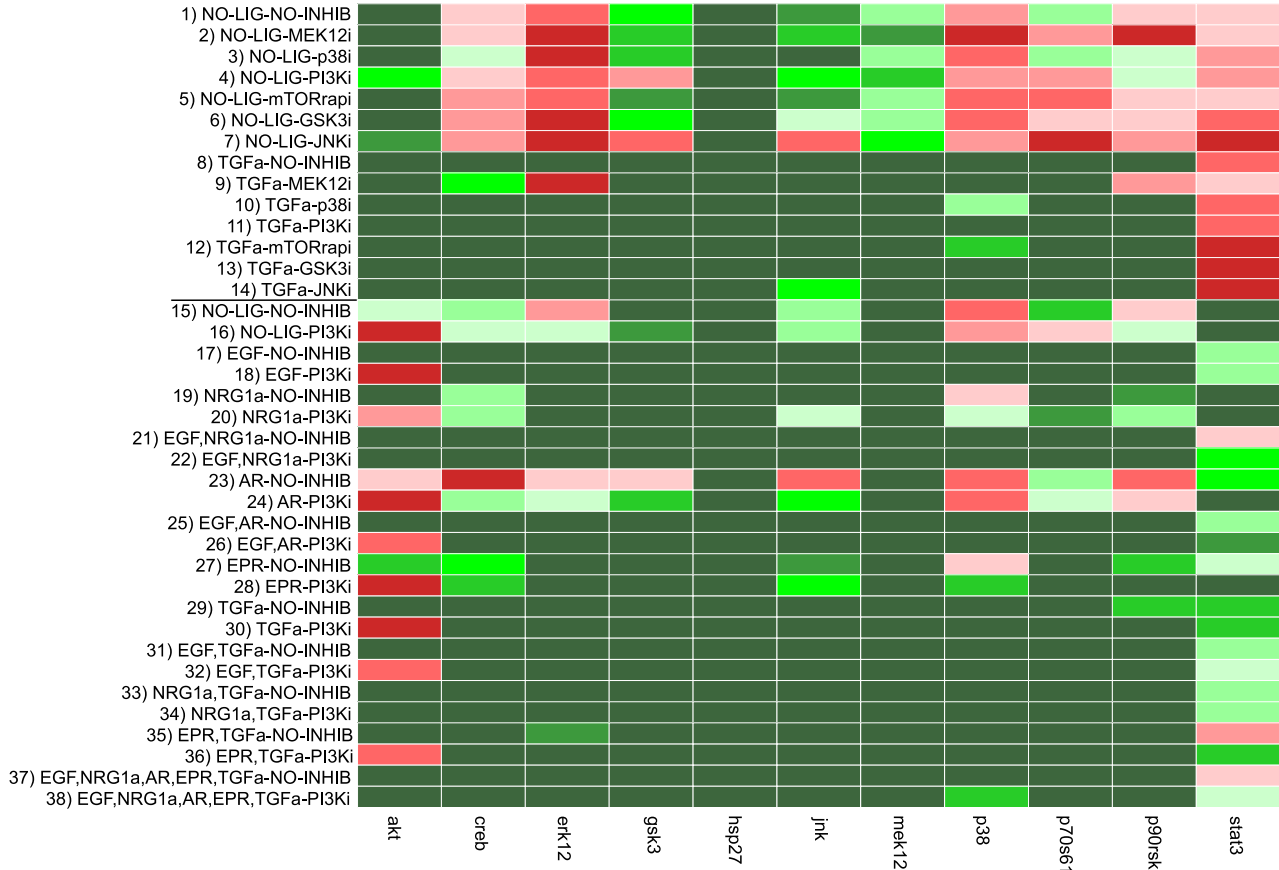
2.1c)



2.2a)



2.2b)



2.2c)

