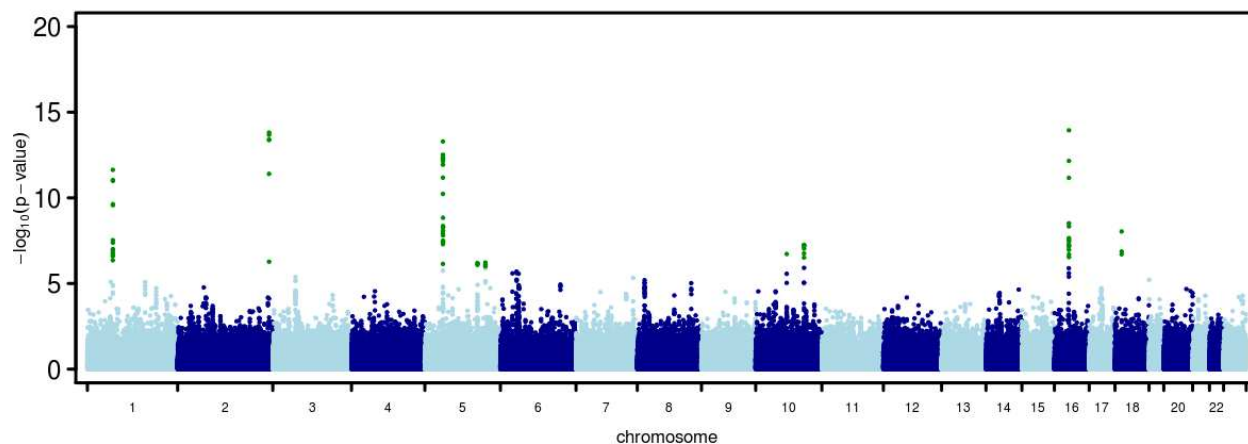
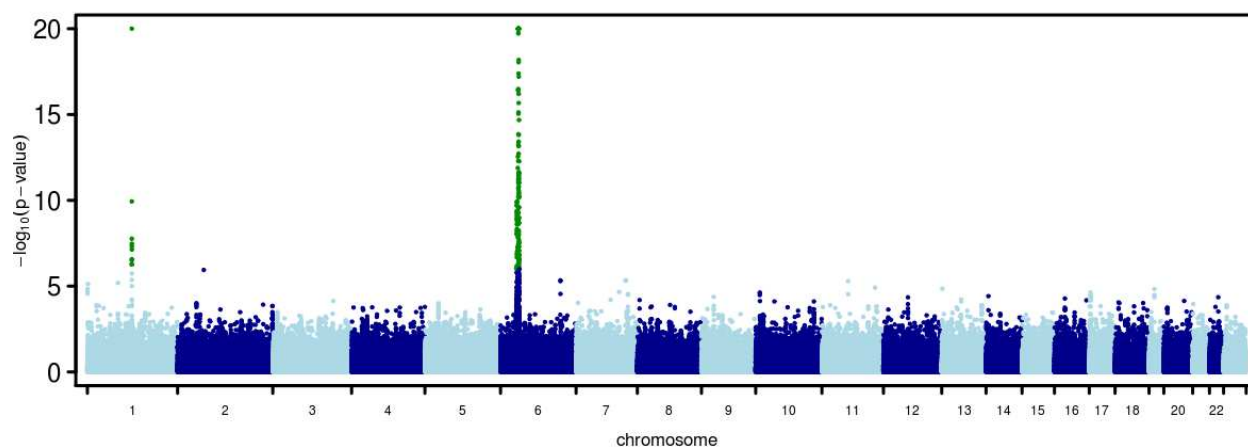


Figure S13: Manhattan plots showing results of single marker analysis for **a)** Crohn's disease, **b)** Rheumatoid arthritis, and **c)** Type 1 diabetes datasets from our re-analysis. Shown are $-\log_{10}$ p-values where large values are truncated at 20. Markers with $-\log_{10}$ p-values > 6 are colored green.

(a) Crohn's disease



(b) Rheumatoid arthritis



(c) Type 1 diabetes

